

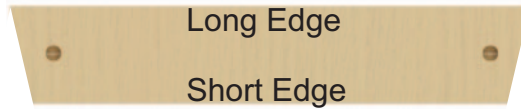
Ergonomic Kneeling Chair for Home & Office (RRKNCHCHGRY)

ASSEMBLY INSTRUCTIONS

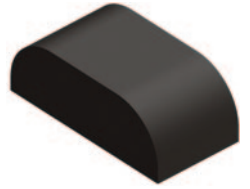
Parts:



(1) **BRACE1**



(1) **BRACE2**
(Shorter than BRACE1)



(2) **KNEEPADS**



(1) **CBRACE**



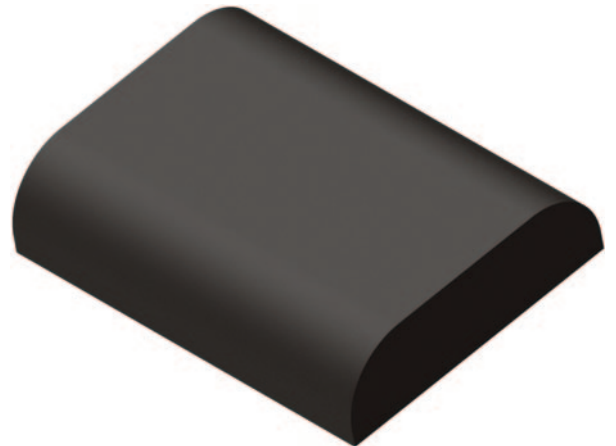
(1) **FRONT**



(1) **LEFT SIDE**



(1) **RIGHT SIDE**



(1) **SEAT**

Hardware:



(10) **LONG
SCREW**



(10) **BARREL
NUT**



(6) **SHORT
SCREW**

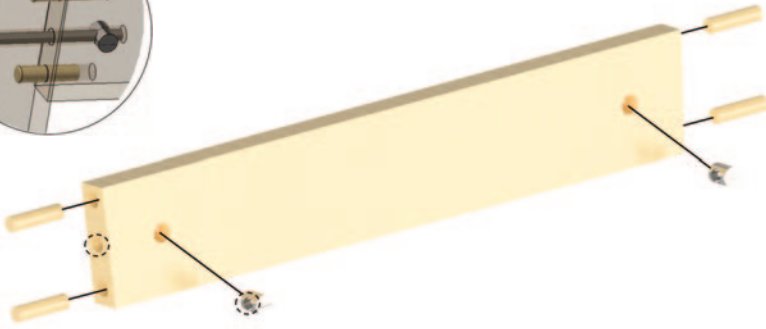
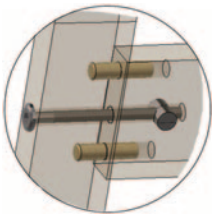


(12) **DOWEL**



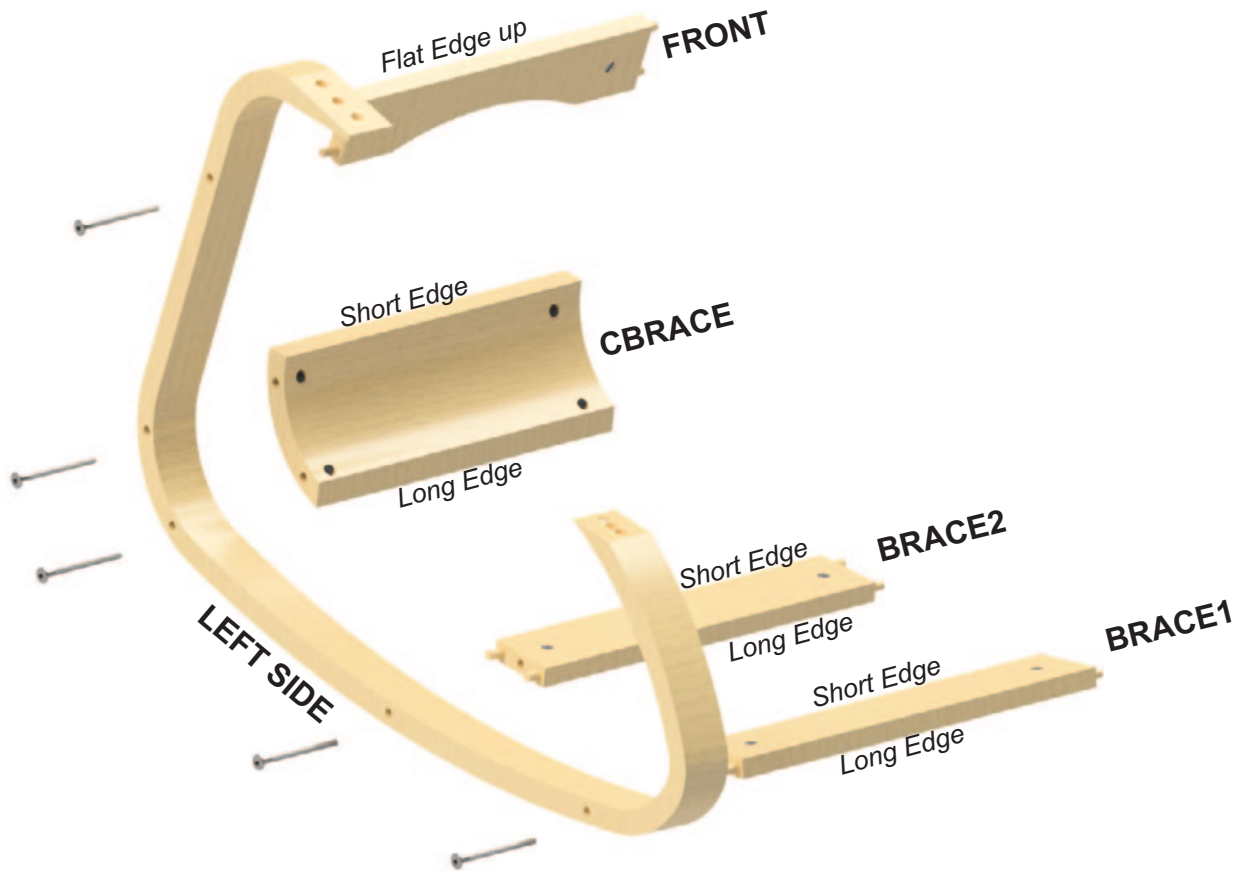
(1) **ALLEN WRENCH**

For assistance, call: Customer Service 1-800-247-8465



STEP 1:

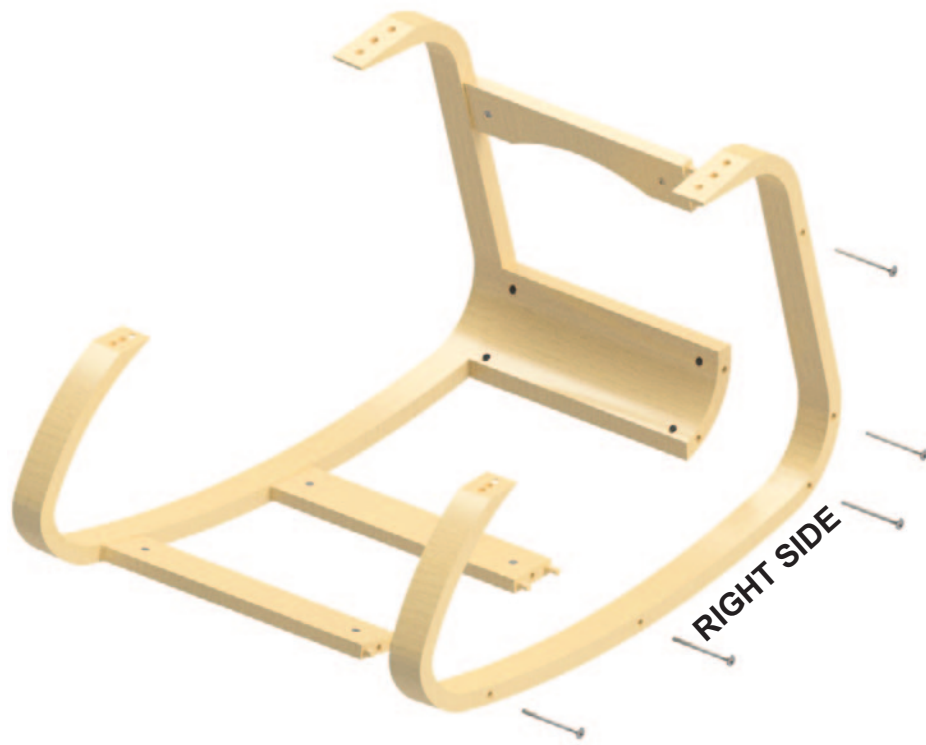
Insert **(4) DOWELS** into the pre-drilled holes that do not go through, on the short edges of **BRACE1** as shown above. Next, insert **(2) BARREL NUTS** into the pre-drilled holes on the front face of **BRACE1**. Adjust the **BARREL NUTS** such that the holes line-up with the side screw holes as shown. Repeat the steps for inserting **BARREL NUTS** into the **CBRACE** and **DOWELS/ BARREL NUTS** into **BRACE2** & **FRONT** pieces.



STEP 2:

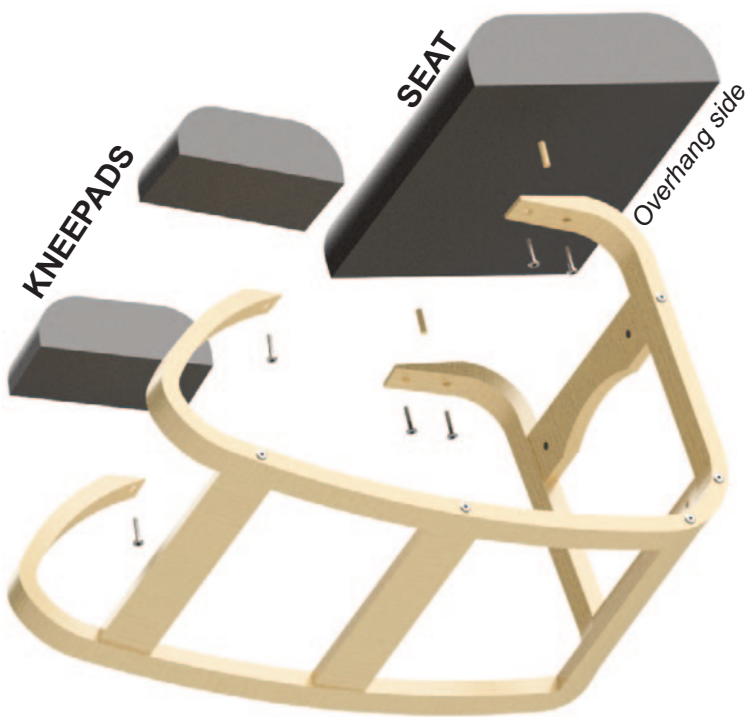
Ensure all the **DOWELS** are inserted and the **BARREL NUTS** are oriented accurately. Orient the **LEFT SIDE** piece as shown and attach the **FRONT, CBRACE, BRACE2 & BRACE1** pieces by inserting the **DOWEL** pins into their respective holes in the **LEFT SIDE** piece. Secure the pieces by means of **(5) LONG SCREWS**. Tighten all the screws using **ALLEN WRENCH**.

For assistance, call: Customer Service 1-800-247-8465



STEP 3:

Repeat **STEP 2** to secure the **RIGHT SIDE** piece to the assembly using **(5) LONG SCREWS**.



STEP 4:

Looking from the bottom of the **SEAT** and **KNEEPADS**, insert **(2) DOWEL** pins in the center holes of the **SEAT** piece and **(4) DOWEL** pins in the outer 2 holes of the **KNEEPADS**. Secure the **SEAT** & **KNEEPADS** similar to earlier steps using **(6) SHORT SCREWS**, ensuring the overhang is on the back side of the **SEAT** as shown.

Final product should resemble the above picture. Ensure all screws are snug fit. **DO NOT DRILL. DO NOT OVERTIGHTEN.** Assembly of the **KNEELING CHAIR** is now complete.